



K2 [blackpearl]™

# PRODUCT OVERVIEW

# K2 blackpearl is many things to many people.

It is workflow. It is business process management. And it is more.

K2 blackpearl™ allows you to pull together business processes, people, services, information and systems into a single application – a **process-driven application** – that drives business.

K2 blackpearl offers simple tools and familiar environments, so it's easy to create processes and applications; and when business needs shift, it's easy to modify these processes and applications.

K2 blackpearl fosters collaboration between business users and technical users.

K2 blackpearl eliminates redundancies and lets you assemble new solutions from information that already exists and code that has already been written.

Everything is visual. Everything is declarative. Everything is reusable. Everything is intuitive.

Envision what you need, and make it so.

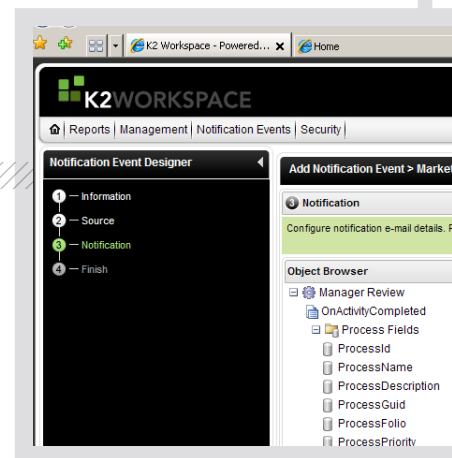
## K2 [blackpearl] FEATURES

### VISUALLY DESIGN PROCESSES AND APPLICATIONS.

- > Design surfaces – hosted in SharePoint, Visio or Visual Studio – are appropriate for different types of users.
- > Designs can be shared between technical and non-technical users.
- > Prebuilt wizards and templates allow rapid configuration.

### LEVERAGE EXISTING ASSETS FOR FASTER PROCESS ASSEMBLY.

- > Virtually anything (processes, forms, reports, etc.) can be saved in libraries and reused.
- > Leverage existing Microsoft investments, like SharePoint, Forms Server and BizTalk.
- > Leverage existing information and existing systems through wizard-driven, third-party integration and an extensible framework.
- > Create composite business entities (customers, invoices, etc.) that aggregate information stored across systems.

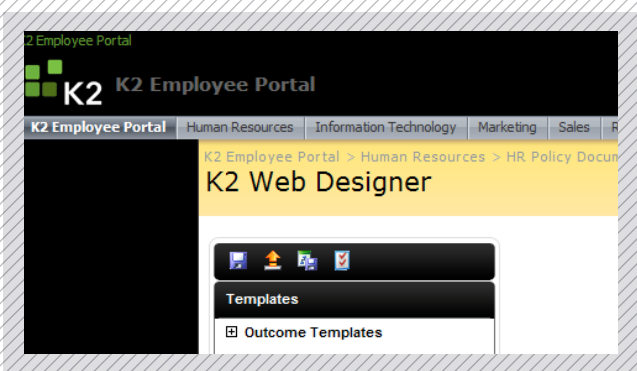
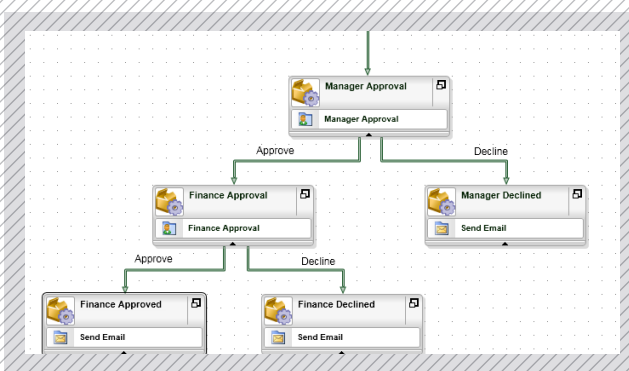
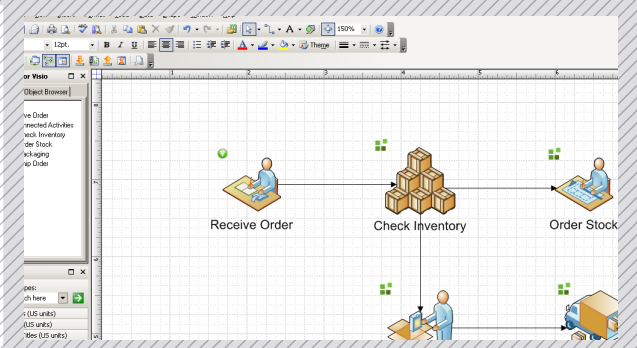
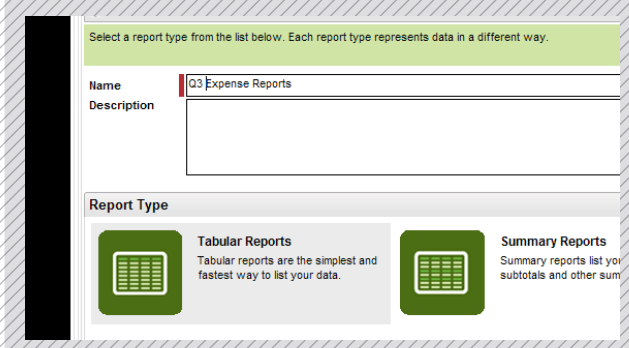


**GET THE INFORMATION YOU NEED, WHEN YOU NEED IT.**

- > Build reports quickly through intuitive, wizard-driven, browser-based report designers.
- > Pull together all information, including data stored within line-of-business systems.
- > SQL Reporting Services-based reports allow for integration with third-party reporting engines.
- > Keep informed in real-time by registering business events and desired outcomes.

**USE K2 [blackpearl] FOR ENDLESS OPTIONS AND APPLICATION CAPABILITIES.**

- > Applications can be surfaced through Web browsers, custom thick-client applications, SharePoint or through Office tools, like Outlook and Word.
- > Processes can be initiated manually or as a result of events.
- > A user's tasks can be aggregated across processes into a single work list.
- > Take action on a single task or in a batch.
- > Intuitive tools give business and technical users the ability to start with simple solutions and extend and adapt as business needs dictate.
- > Temporarily assign or reassign tasks, as needed, for any given process.
- > Provide business users the ability to modify processes, forms and reports.



Process-driven apps – fast.



[what will you create?]

[ [WWW.K2.COM](http://WWW.K2.COM) ]

The K2 platform is for delivering process-driven applications that improve business efficiency. Visual tools make it easy for anyone to assemble reusable objects into applications that use workflow and line-of-business information. K2-based solutions are deployed by a growing number of the global Fortune 100. K2 is a division of SourceCode Technology Holdings, Inc. based in Redmond, Washington, and has offices all over the world.

**CORPORATE HEADQUARTERS**

4042 148th Avenue NE  
Redmond, WA 98052  
USA

**PH** +1 (425) 883 4200  
**FAX** +1 (425) 671 0411

**EMEA HEADQUARTERS**

26 Worples Road  
Wimbledon  
London SW19 4EE  
UK

**PH** +44 (0) 845 612 0912  
**FAX** +44 (0) 845 612 0911

**APAC HEADQUARTERS**

9 Shenton Way #06-02  
Singapore  
068813

**PH** +65 6327 4110  
**FAX** +65 6327 4120

Copyright © 2008, SourceCode Technology Holdings, Inc. All rights reserved. Patents pending. SourceCode and K2 are registered trademarks or trademarks of SourceCode Technology Holdings, Inc. in the United States and/or other countries. The names of actual companies and products mentioned herein may be the trademarks of their respective owners.

